

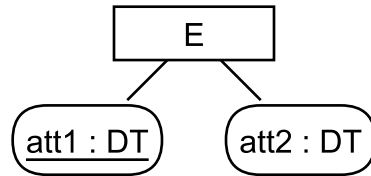
ER-Konzepte

ER-Modell

Relationales Modell

UML-Konzepte

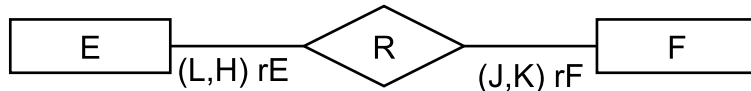
Entity,
Attribut,
Datentyp



E(att1,att2)
primary key (att1)

Klasse,
(Objekt-)Attribut,
Datentyp

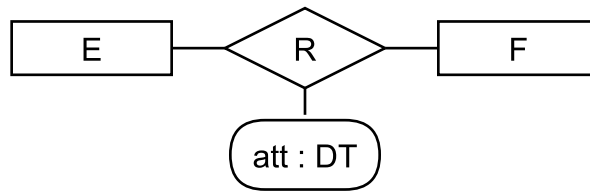
Relationship/Beziehung,
Rolle,
Multiplizität (Low, High),
Default (0,*)



R(keyAttrrsE,keyAttrrsF)
primary key (keyAttrrsE,keyAttrrsF)
foreign key (keyAttrrsE) references E
foreign key (keyAttrrsF) references F

Assoziation/Beziehung,
Rolle,
Multiplizität,
Default 0..*

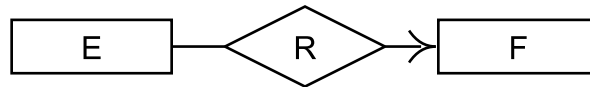
Relationship-Attribut,
Beziehungs-Attribut



R(keyAttrrsE,keyAttrrsF,att)
...

Assoziationsklasse,
Assoziationsklassen-Attribut

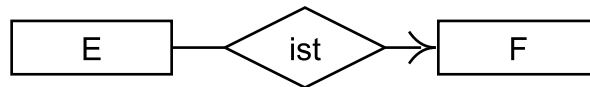
(partielle)
funktionale Beziehung



E(...,keyAttrrsF)
foreign key (keyAttrrsF) references F

(partielle)
funktionale Assoziation

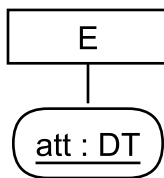
ist-Beziehung,
Generalisierung,
Spezialisierung,
Vererbung



E(...,keyAttrrsF)
primary key (keyAttrrsF)
foreign key (keyAttrrsF) references F

Generalisierung,
Spezialisierung,
Vererbung

Schlüssel,
Schlüsselattribut,
Nicht-Schlüsselattribut



Schlüssel,
Schlüsselattribut,
Nicht-Schlüsselattribut