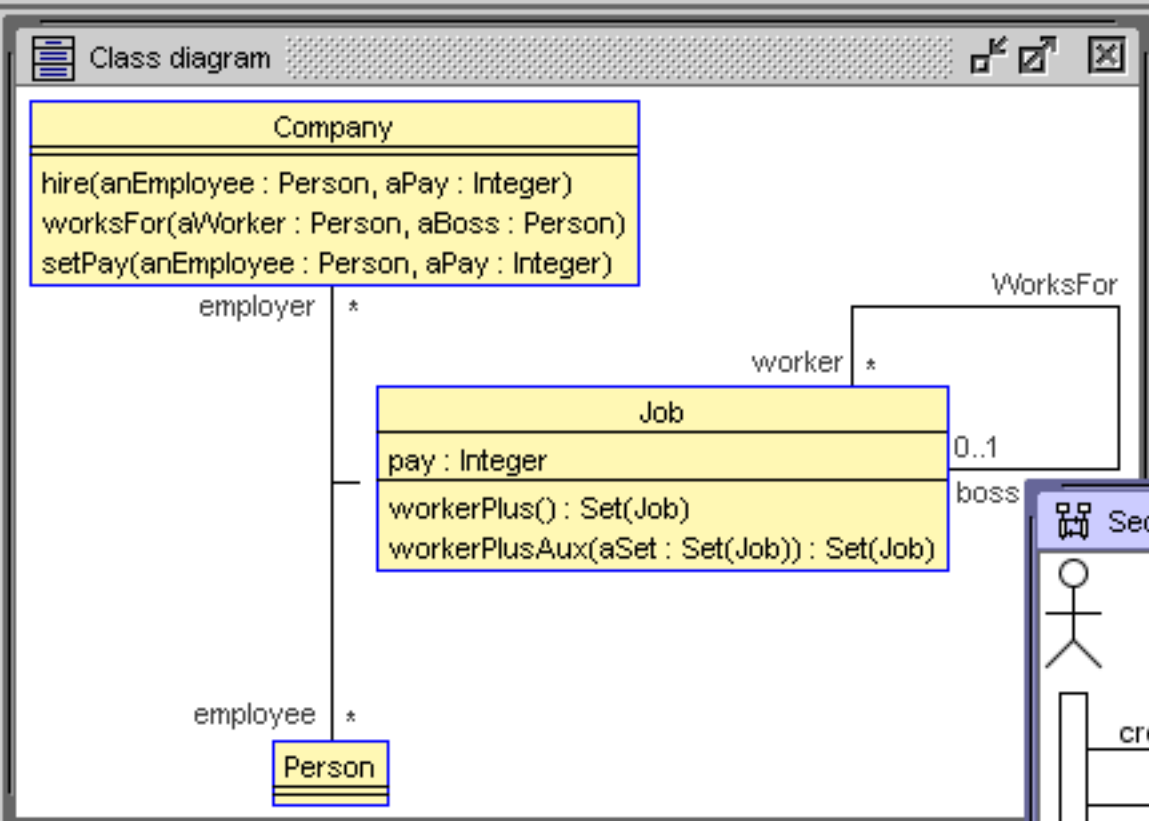




PersonCompany

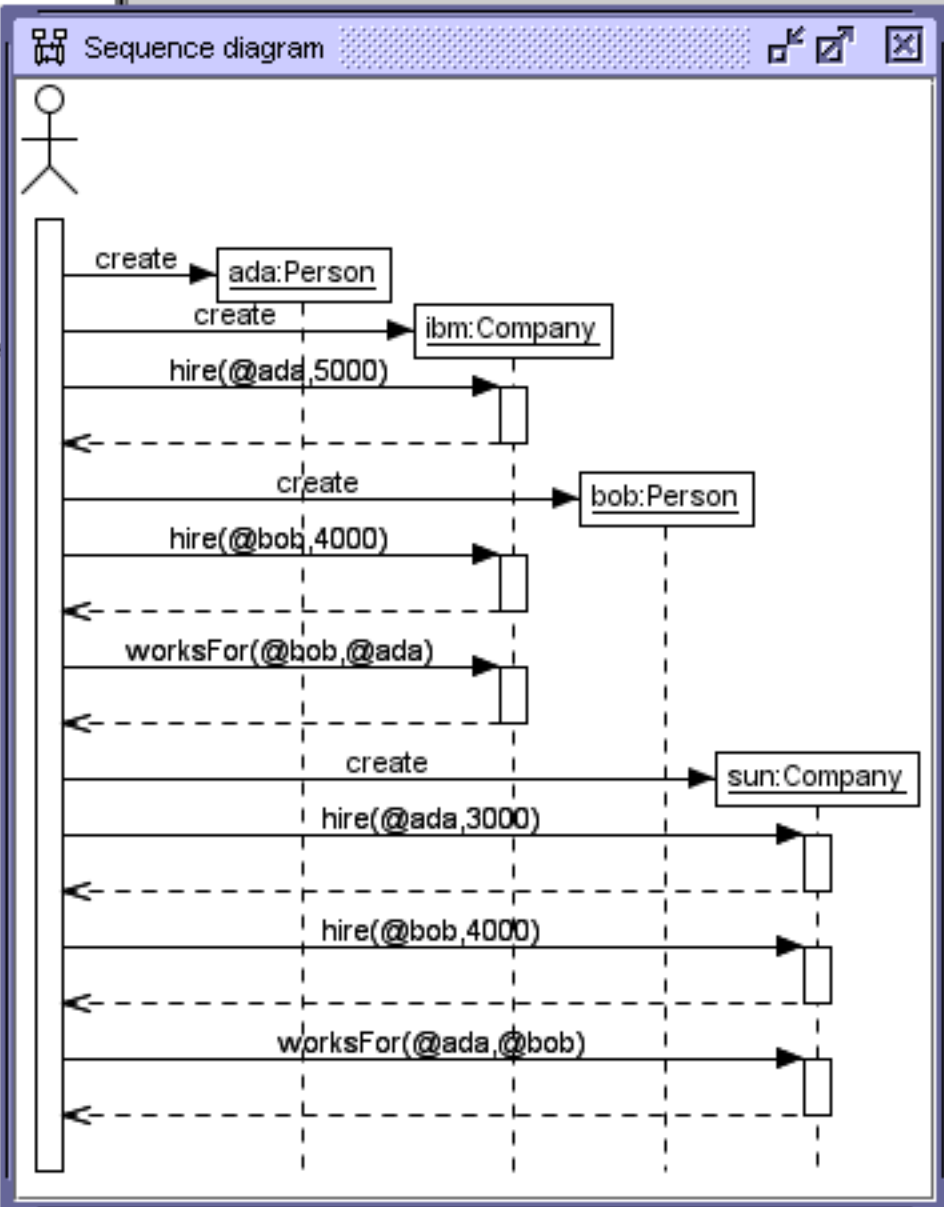
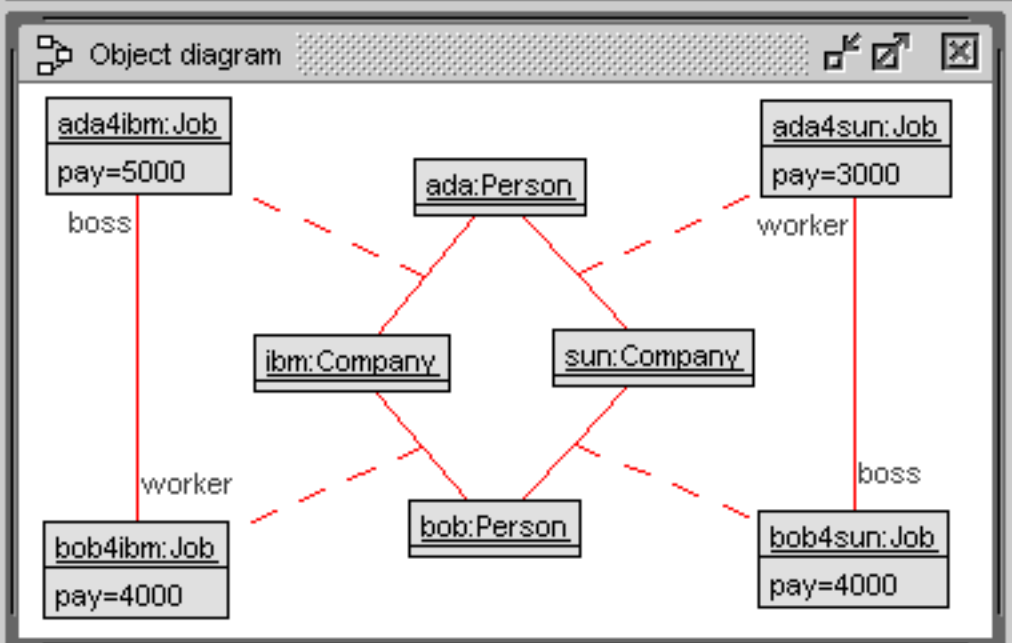
- Classes
 - Person
 - Company
 - Job
- Associations
 - WorksFor
- Invariants
 - Job::bossBetterPaidThanWorker
 - Job::acyclicWorksFor
 - Job::payPositive
 - Job::inCompany
- Pre-/Postconditions
 - pre hire::parametersDefined
 - pre hire::jobLinkNotExistent
 - post hire::jobLinkExistent
 - post hire::payInitialized
 - pre worksFor::parametersDefined
 - pre worksFor::worksForLinkNotExistent
 - post worksFor::worksForLinkExistent
 - pre setPay::parametersDefined
 - pre setPay::isEmployee
 - post setPay::payModified
 - post setPay::newPayHigher



Class invariants

Invariant	Result
Job::acyclicWorksFor	true
Job::bossBetterPaidThanWorker	true
Job::inCompany	true
Job::payPositive	true
Constraints ok.	100%

context self : Job **inv** acyclicWorksFor:
self.workerPlus()->excludes(self)



Evaluate OCL expression

Enter OCL expression:

Result:

Buttons: Evaluate, Browser, Clear

Evaluate OCL expression

Enter OCL expression:

Result:

Buttons: Evaluate, Browser, Clear